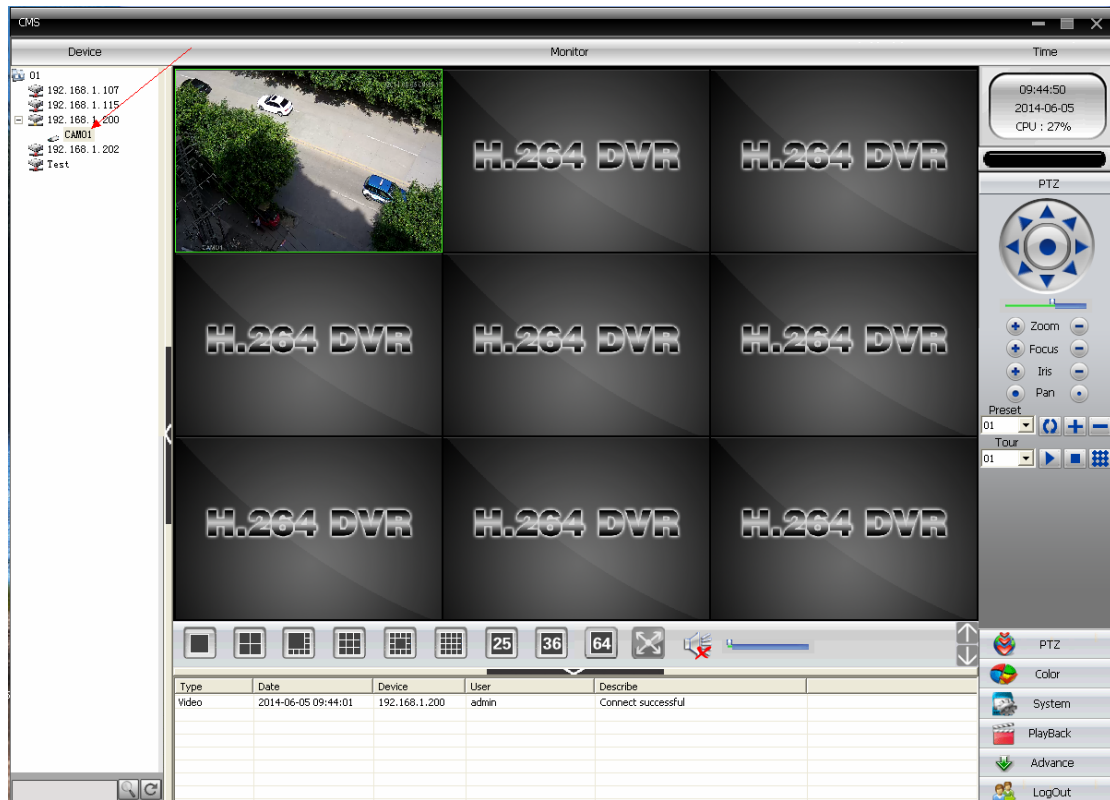
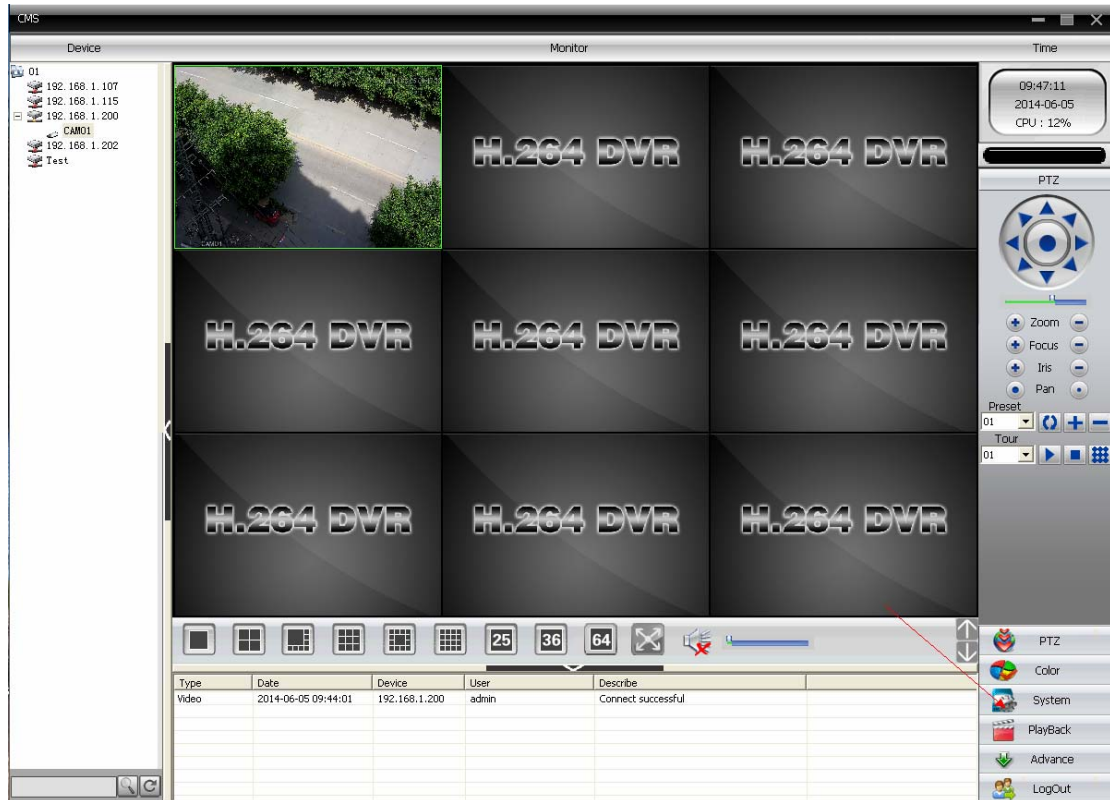


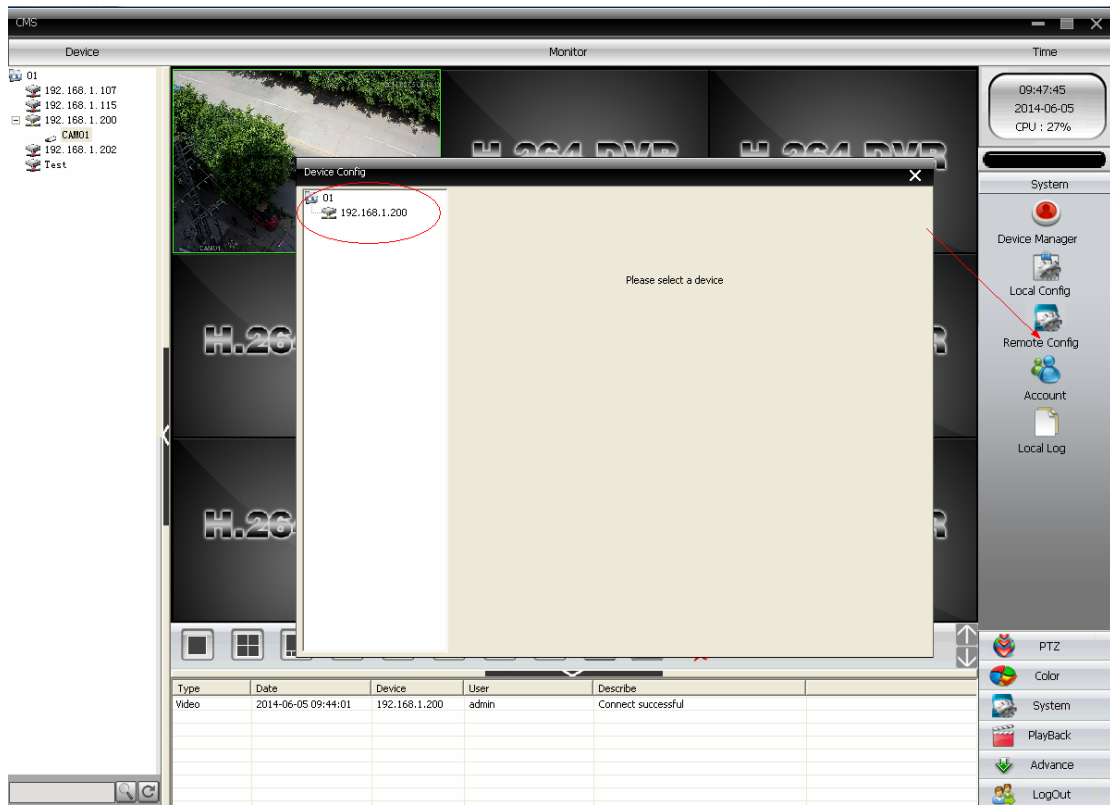
1. choose the IP address of the camera



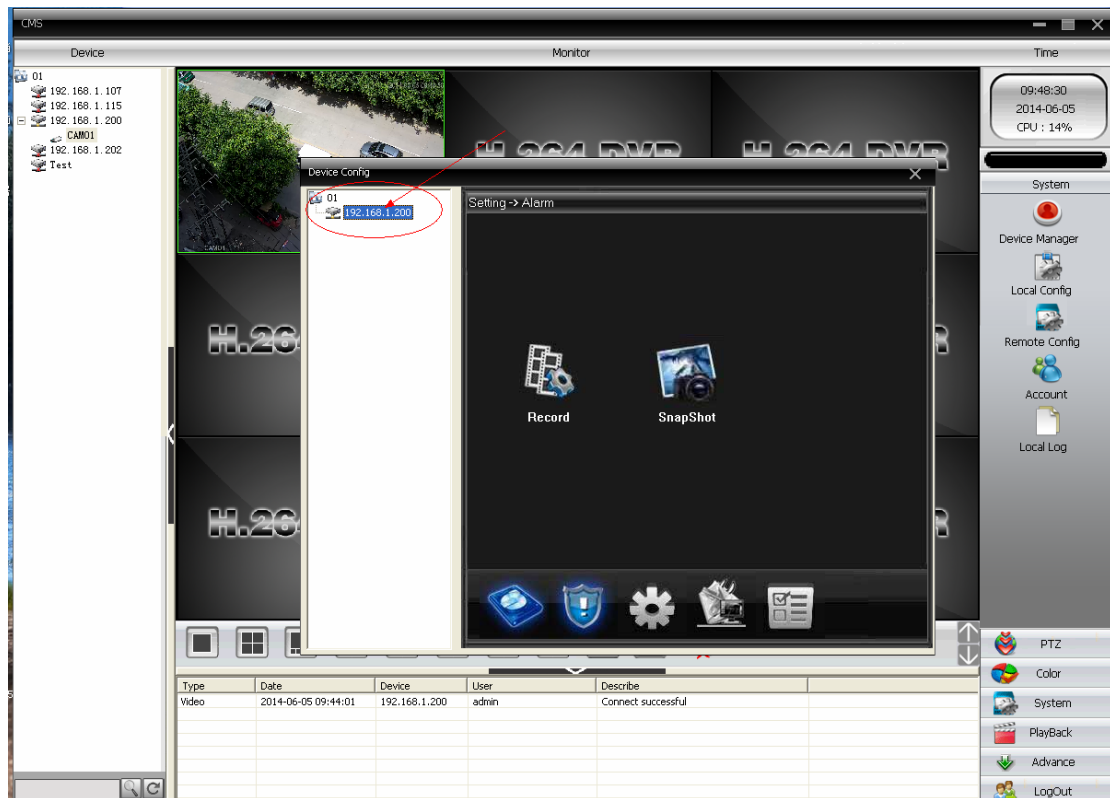
2. Click "system"



3. choose "Remote Config"



4. Choose the IP address in the dialog optional



5. click the icon



The screenshot shows a CMS interface with a 'Device Config' window open. The window title is 'Setting -> Alarm'. It contains several icons: 'Video Motion', 'Video Blind', 'Video Loss', 'Alarm Input', and 'Abnormal'. A red arrow points to the 'Alarm Input' icon. The background shows a video feed of a street scene. The right sidebar contains system management options like 'System', 'Device Manager', 'Local Config', etc. The bottom table shows a log entry for a successful connection.

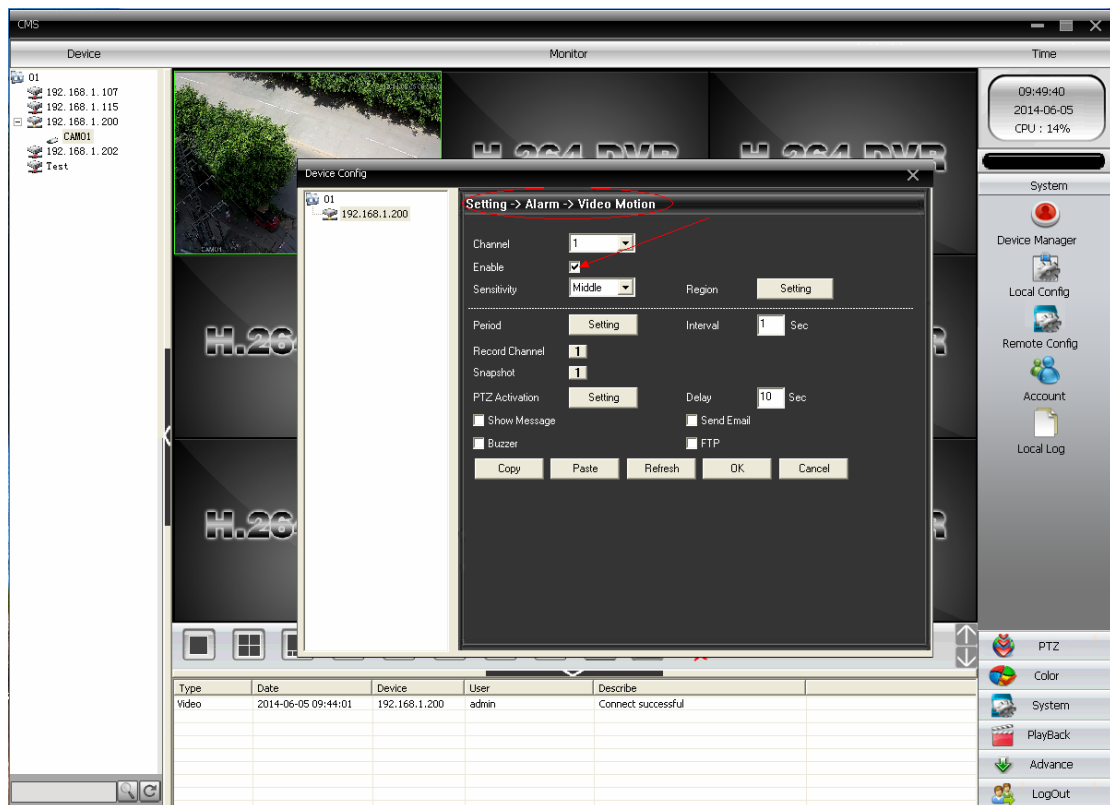
Type	Date	Device	User	Describe
Video	2014-06-05 09:44:01	192.168.1.200	admin	Connect successful

6. Choose the selection "video Motion"

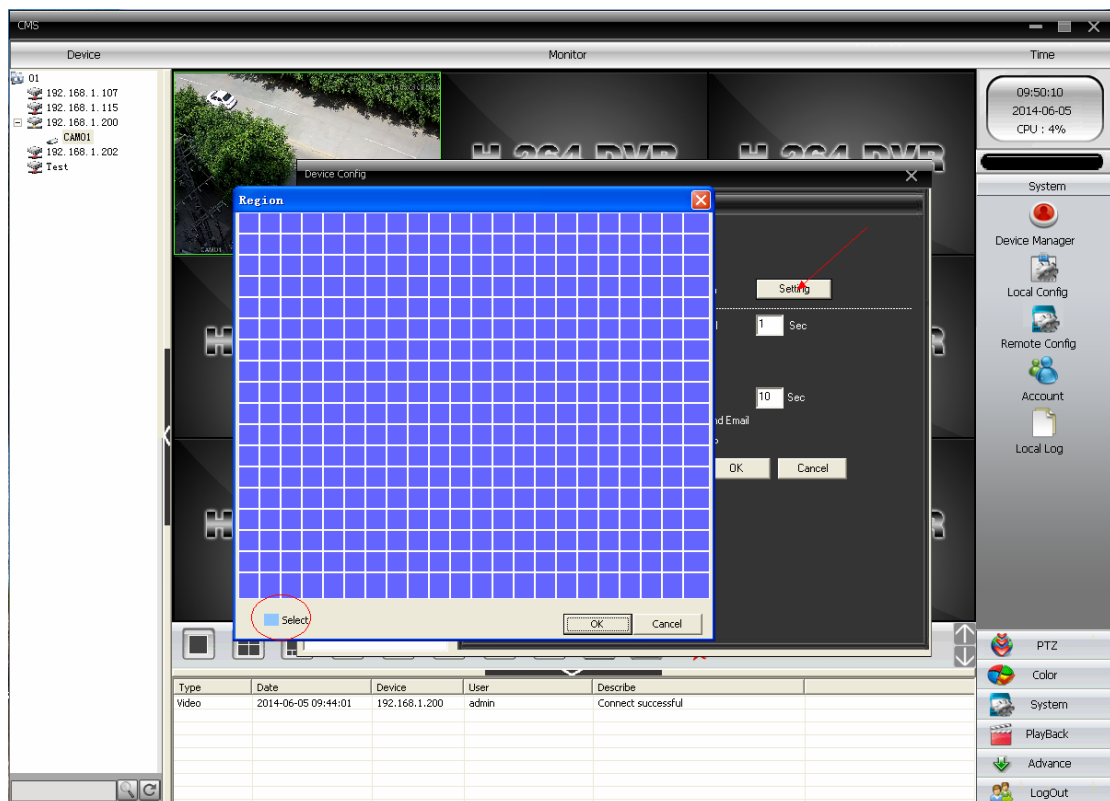
The screenshot shows the same CMS interface as above, but now the 'Video Motion' icon in the 'Device Config' window is highlighted in blue. A red arrow points to this icon. The rest of the interface, including the video feed, sidebar, and log table, remains the same.

Type	Date	Device	User	Describe
Video	2014-06-05 09:44:01	192.168.1.200	admin	Connect successful

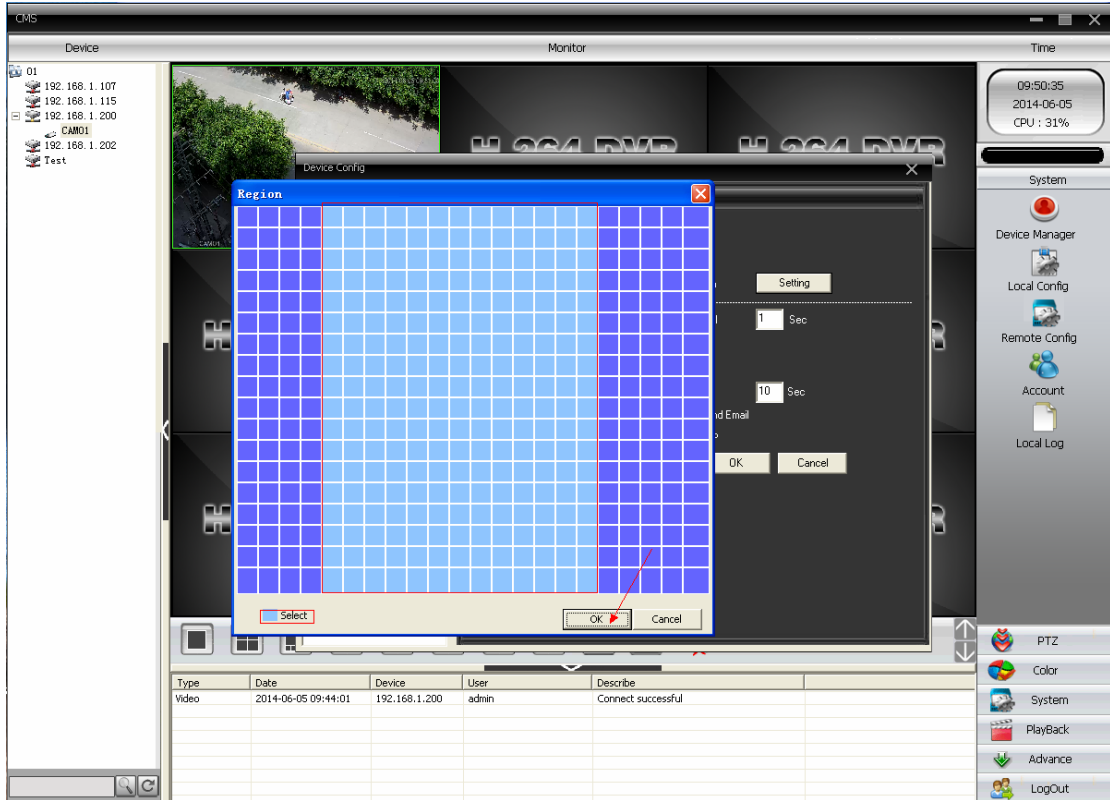
7.follow the below steps to setting the motion detection area



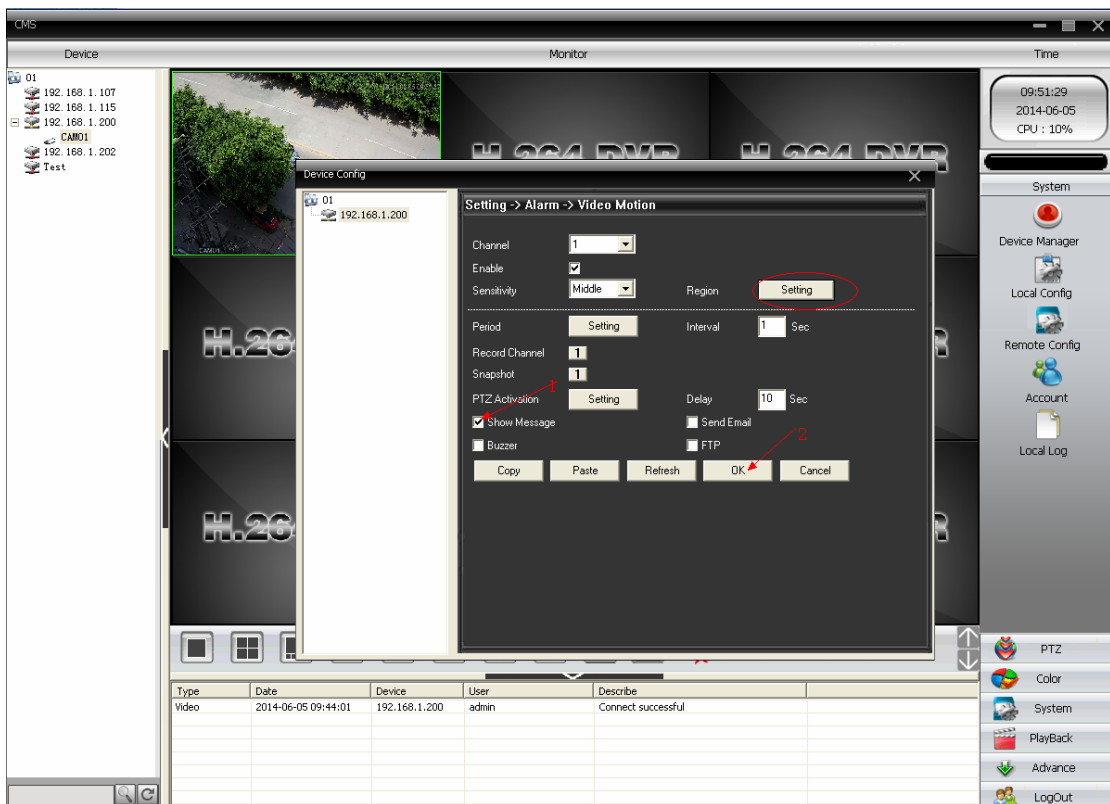
Pic 0-1



Pic 0-2



Pic 0-3



Pic 0-4

8. in this step,you will see the record of the motion detection

Device: 01
 192.168.1.107
 192.168.1.115
 192.168.1.200
 CAM01
 192.168.1.202
 Test

Time: 09:52:42
 2014-06-05
 CPU : 15%

System
 Device Manager
 Local Config
 Remote Config
 Account
 Local Log

PTZ
 Color
 System
 PlayBack
 Advance
 LogOut

Type	Date	Device	User	Describe
Video Motion	2014-06-05 09:52:40	192.168.1.200	admin	Channel 1 Video Motion
Video Motion	2014-06-05 09:52:32	192.168.1.200	admin	Channel 1 Video Motion
Video Motion	2014-06-05 09:52:24	192.168.1.200	admin	Channel 1 Video Motion
Video	2014-06-05 09:44:01	192.168.1.200	admin	Connect successful

Device: 01
 192.168.1.107
 192.168.1.115
 192.168.1.200
 CAM01
 192.168.1.202
 Test

Time: 09:53:08
 2014-06-05
 CPU : 10%

System
 Device Manager
 Local Config
 Remote Config
 Account
 Local Log

PTZ
 Color
 System
 PlayBack
 Advance
 LogOut

Type	Date	Device	User	Describe
Video Motion	2014-06-05 09:53:00	192.168.1.200	admin	Channel 1 Video Motion
Video Motion	2014-06-05 09:52:51	192.168.1.200	admin	Channel 1 Video Motion
Video Motion	2014-06-05 09:52:49	192.168.1.200	admin	Channel 1 Video Motion
Video Motion	2014-06-05 09:52:48	192.168.1.200	admin	Channel 1 Video Motion
Video Motion	2014-06-05 09:52:44	192.168.1.200	admin	Channel 1 Video Motion
Video Motion	2014-06-05 09:52:40	192.168.1.200	admin	Channel 1 Video Motion
Video Motion	2014-06-05 09:52:32	192.168.1.200	admin	Channel 1 Video Motion
Video Motion	2014-06-05 09:52:24	192.168.1.200	admin	Channel 1 Video Motion